

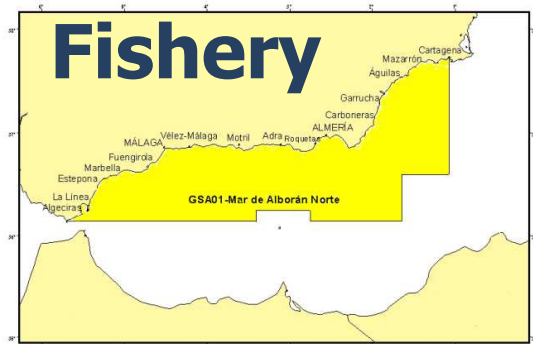


**SRWG on shared demersal resources ad hoc Scientific Working Group between Morocco and Spain on *Pagellus bogaraveo* in the Gibraltar Strait area.
Tanger (Morocco), 19 Mars 2012**

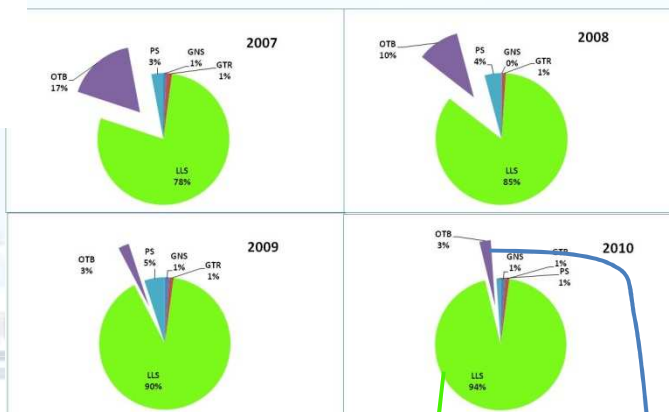
Spanish information about the red seabream (*Pagellus bogaraveo*) trawl fishery in the GSA01 (Northern Alboran Sea)



**José Luis Pérez Gil
CopeMed II Consultant**



Five types of gear: Bottom otter trawl (OTB), Set gillnet (GNS), Trammel net (GTR), Purse seine (PS) and Set longlines (LLS)



Bottom otter trawl

→ by-catch

→ About 5% Total GSA01 catch

Species	FAO cod.	GSA01_Set longlines 2010_ton.
<i>P. hoaraveo</i>	SBR	179
<i>M. merluccius</i>	HKE	21
<i>P. blennoides</i>	GFB	8
<i>Diplodus spp.</i>	SRG	1.4
<i>P. erythrinus</i>	PAC	1.3
<i>P. acarne</i>	SBA	1
<i>L. budegassa</i>	ANK	0.2
<i>L. piscatorius</i>	MON	0.1
<i>D. labrax</i>	BSS	0.06

ALGECIRAS
PORT: 134 t

Species	FAO cod.	GSA01_TRAWL_2010_ton.
<i>M. poutassou</i>	WHB	1031
<i>T. trachurus</i>	HOM	881
<i>M. merluccius</i>	HKE	530
<i>P. acarne</i>	SBA	219
<i>P. blennoides</i>	GFB	194
<i>M. barbatus</i>	MUT	187
<i>A. antennatus</i>	ARA	152
<i>L. budegassa</i>	ANK	120
<i>M. surmuletus</i>	MUR	106
<i>P. longirostris</i>	DPS	98
<i>T. mediterraneus</i>	HMM	85
<i>N. norvegicus</i>	NEP	77
<i>L. piscatorius</i>	MON	65
<i>Diplodus spp.</i>	SRG	33
<i>P. erythrinus</i>	PAC	26
<i>S. pilchardus</i>	PIL	14
<i>B. boops</i>	BOG	13
<i>S. solea</i>	SOL	7
<i>Scomber spp</i>	MAZ	6
<i>P. bogaraveo</i>	SBR	5
<i>P. maxima</i>	TUR	2
<i>E encrasicolus</i>	ANE	2
<i>Mugilidae</i>	MUL	2
<i>S. aurata</i>	SBG	1
<i>D. labrax</i>	BSS	1

Trawl fleet



- Mean TRB: 37
- Mean HP: 170
- Mean Length: 10 metres
- Mean Age: 23
- Usual fishing gear :” tangonero”

GFCM TASK1 . OPERATIONAL UNITS

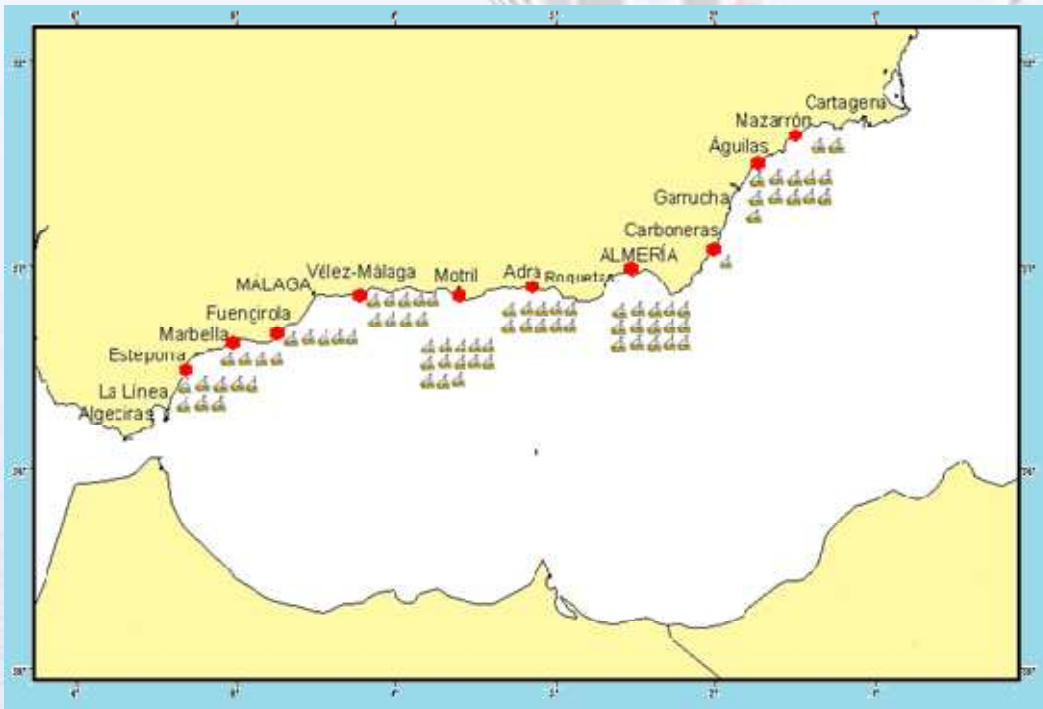
- Fleet segment. → E Trawlers (12-24 metres)
- Gear classes. → 03 Trawls. 0310. Bottom trawls (OTB)

TOTAL TRAWLERS IN GSA01 (2010): 172

TRAWLERS IN GSA01 catching Red seabream (by-catch 2010): 75

MANAGEMENT REGULATION IN FORCE (Council Regulation (EC) No 967/2006 and others).

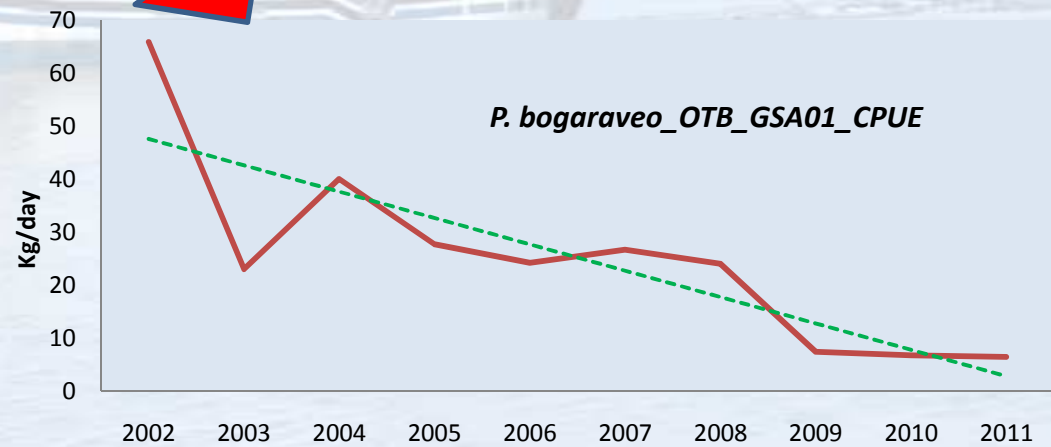
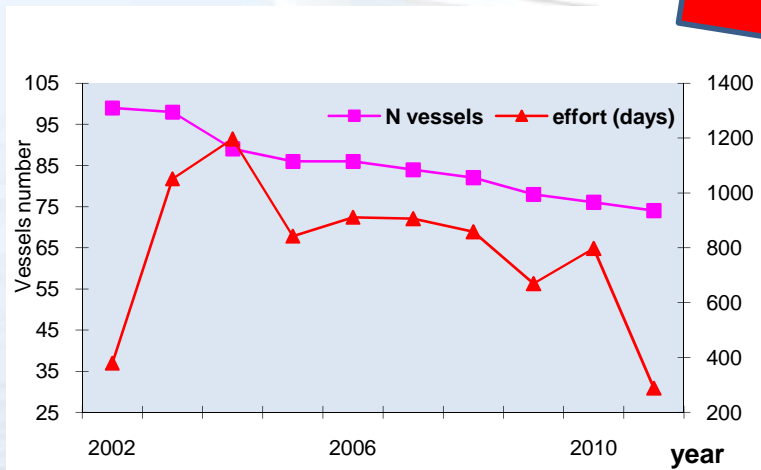
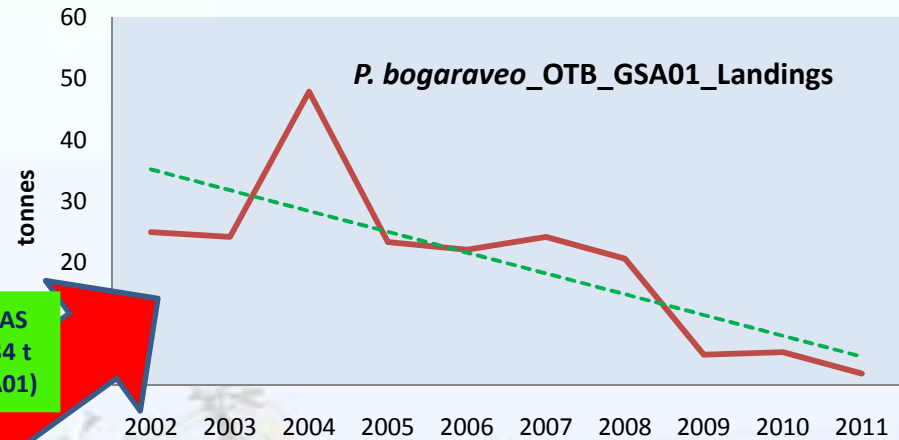
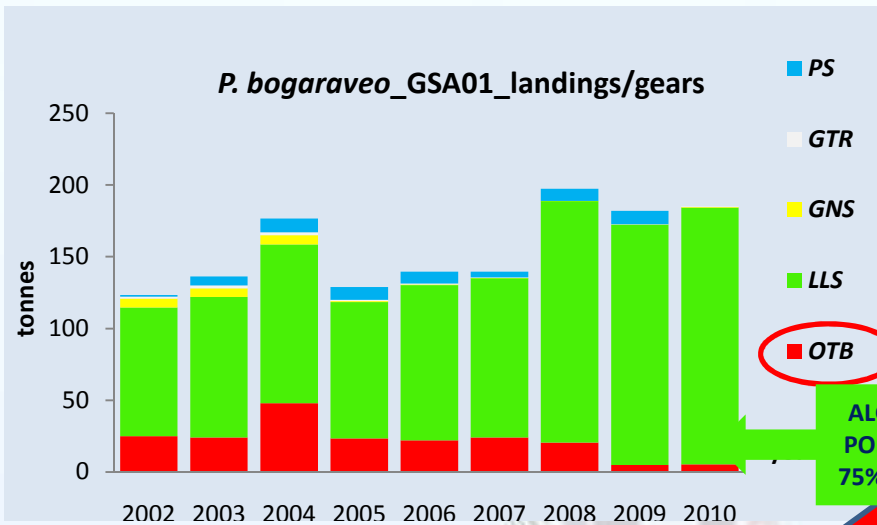
- 12 hours/day, 5 days/week (48 h rest)
- fishing forbidden <50m
- power limit: 316 KW or 500 HP
- 50 mm diamond / 40 square mesh in the codend



Port	Trawlers
Águilas	11
Mazarrón	2
Carboneras	1
Álmería	15
Adra	6
Motril	13
Vélez-Málaga	9
Fuengirola	5
Marbella	4
Estepona	8



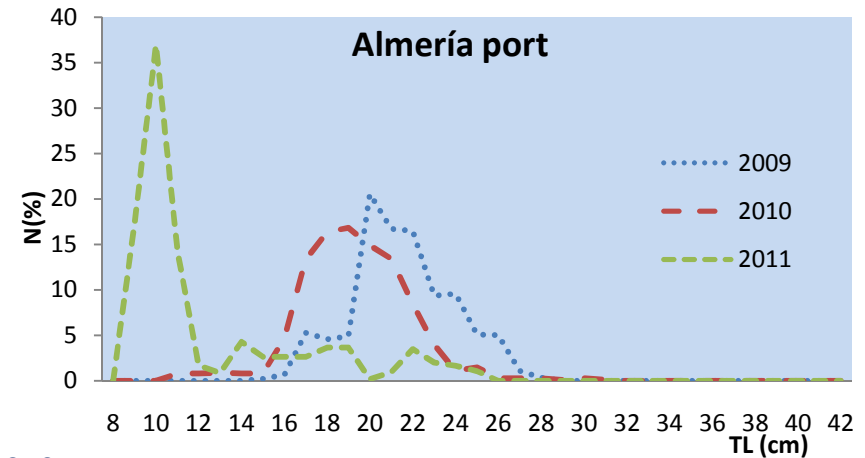
Catch an effort



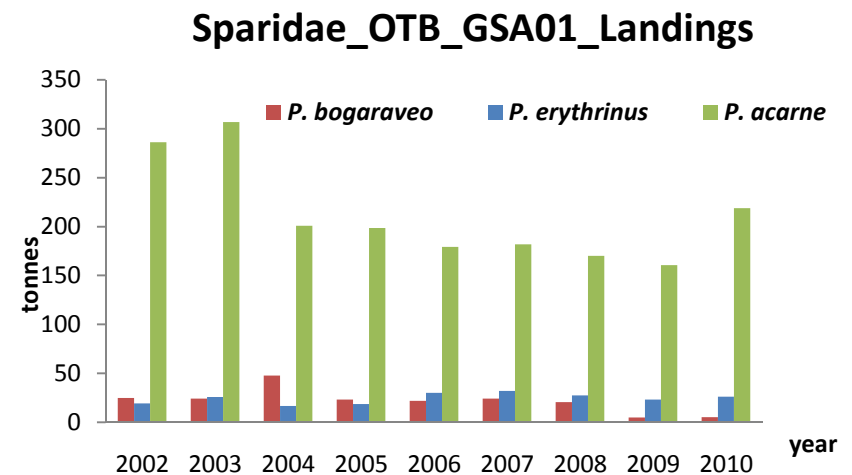
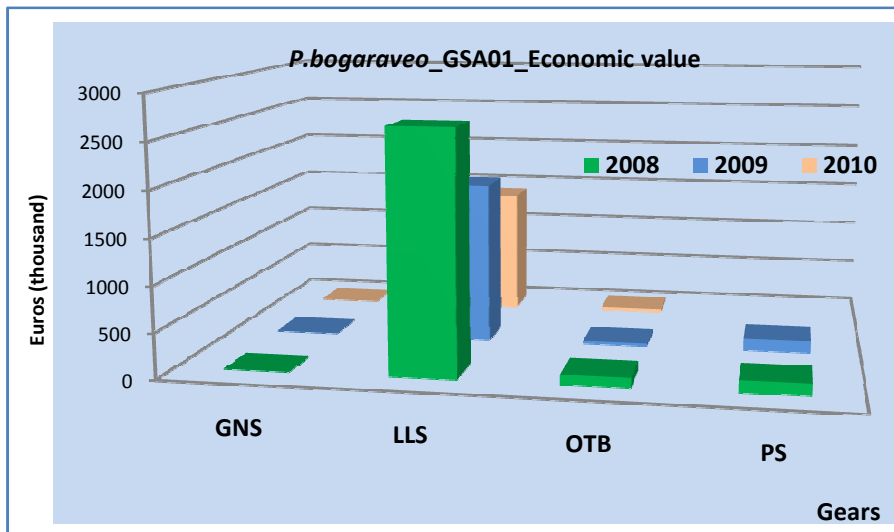
Length Distribution. Commercial Trawl fleet

Commercial sampling: On board and port.

- Data sampling on board: 2003 - 2010.
- Monthly sampling (concurrent from 2009)
- Sampling ports (Almería and Fuengirola).
- Length distribution Almería : (2009-2011 period).

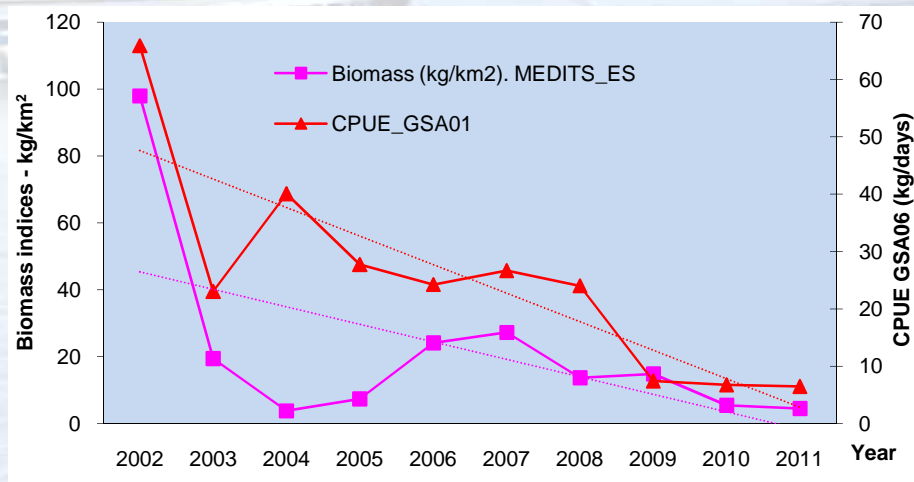
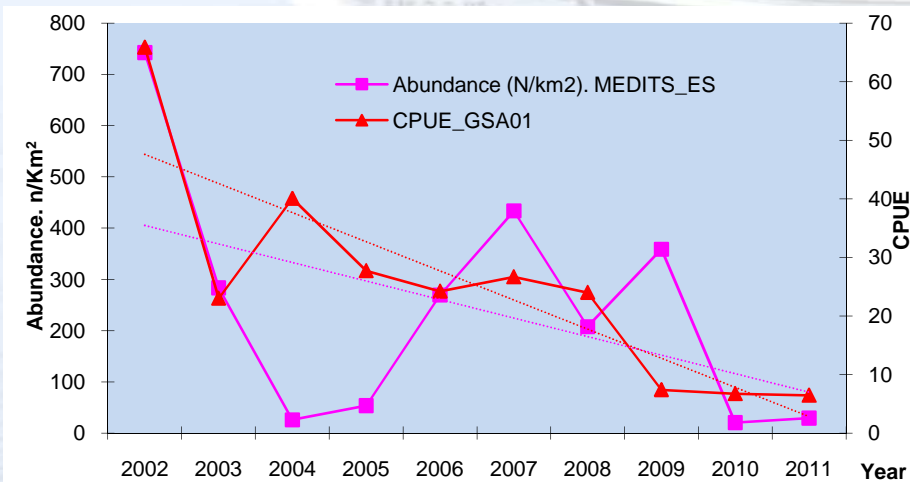
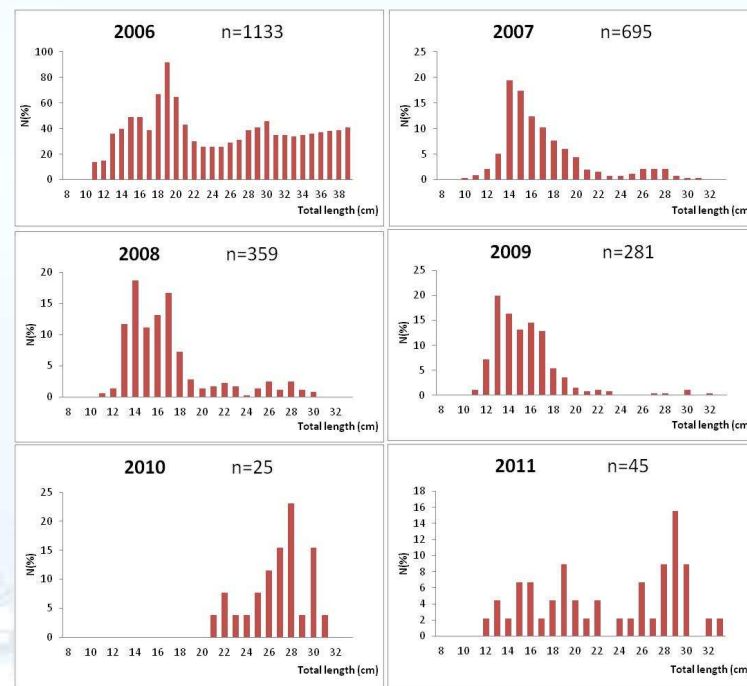
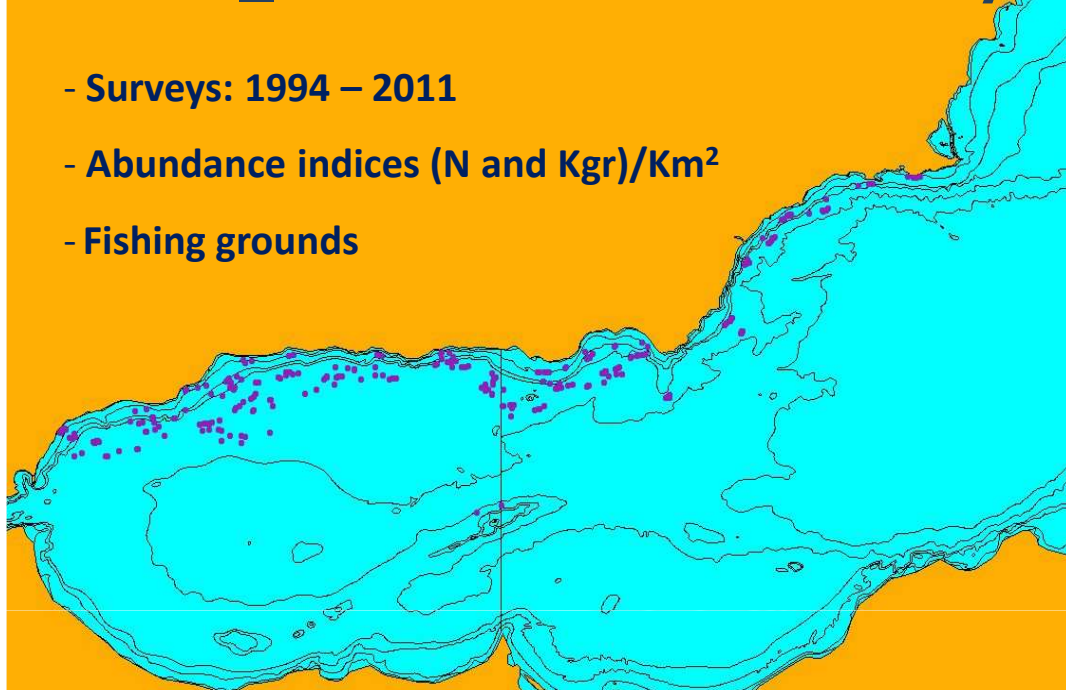


P. Bogaraveo. →No target species in the Data Collection Framework in GSA01.

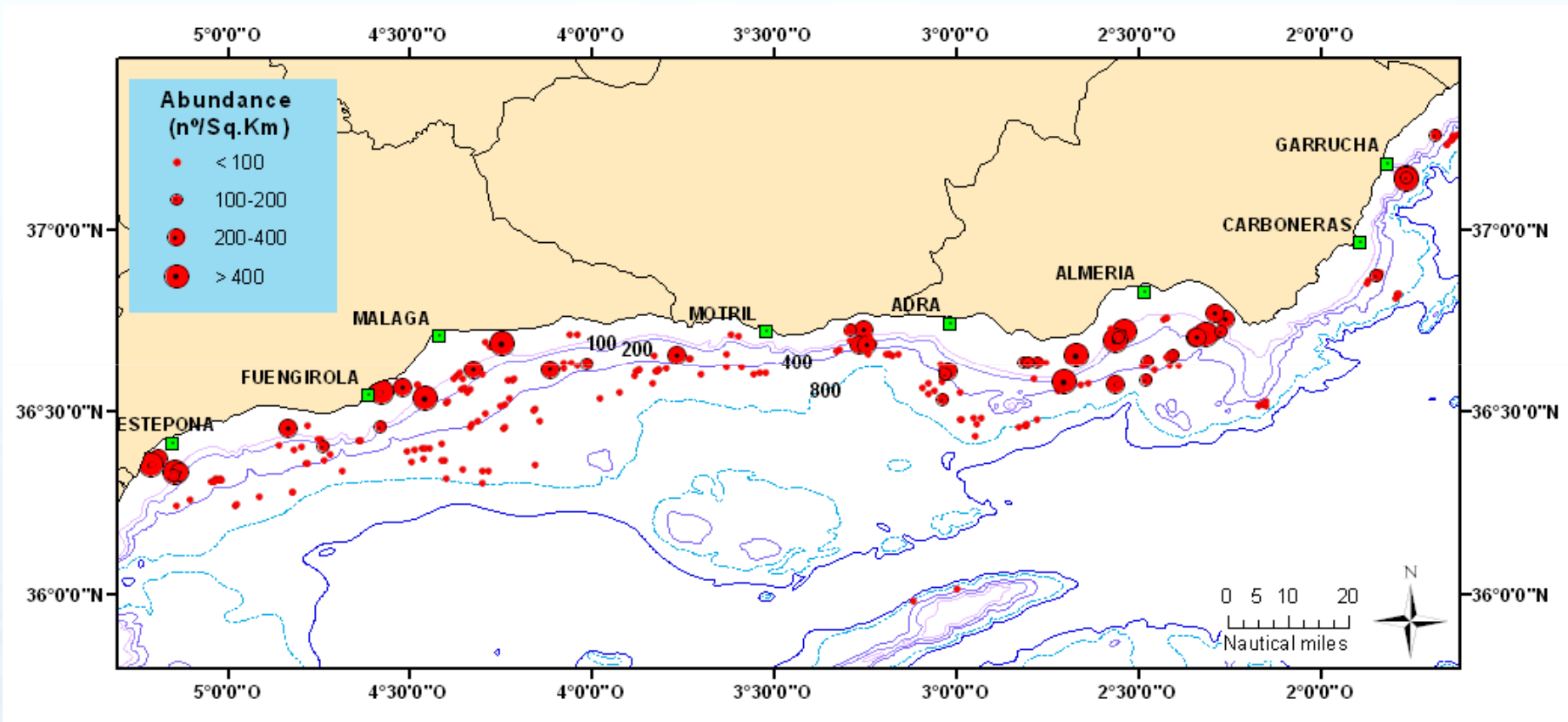


MEDITS_ES. Demersal Trawl Surveys

- Surveys: 1994 – 2011
- Abundance indices (N and Kgr)/Km²
- Fishing grounds



MEDITS_ES. Demersal Trawl Surveys



Abundance indices N/Km² and Bathymetry. (1996 – 2011 period)

Conclusions.

Red seabream Spanish trawl fishery in the GSA01 are a by-catch in the context of the multispecific fishery catching *M. merluccius*, *P. longirostris*, *A. antennatus*, etc like target species.

Trawl fleet caught for the 2009-2011 period averaged 6% of the total catches in the Northern Alboran area (GSA01), However is a target species for long-line “voracera” in the Algeciras port (amount 75% total LLS catch in GSA01). In the rest of the ports, long-lines catches are distributed in several artisanal long-lines gear types with multispecific catches.

Taking into account the features of the Red seabream trawl fishery in the GSA01 this species is not relevant for assessment purposes using only the Bottom Otter Trawl métier.

